



S P C T R
fadin**asr**





S P C T R is not a ghost. It's a family of lamps united in one conceptual design with mirror-like mistral surfaces.

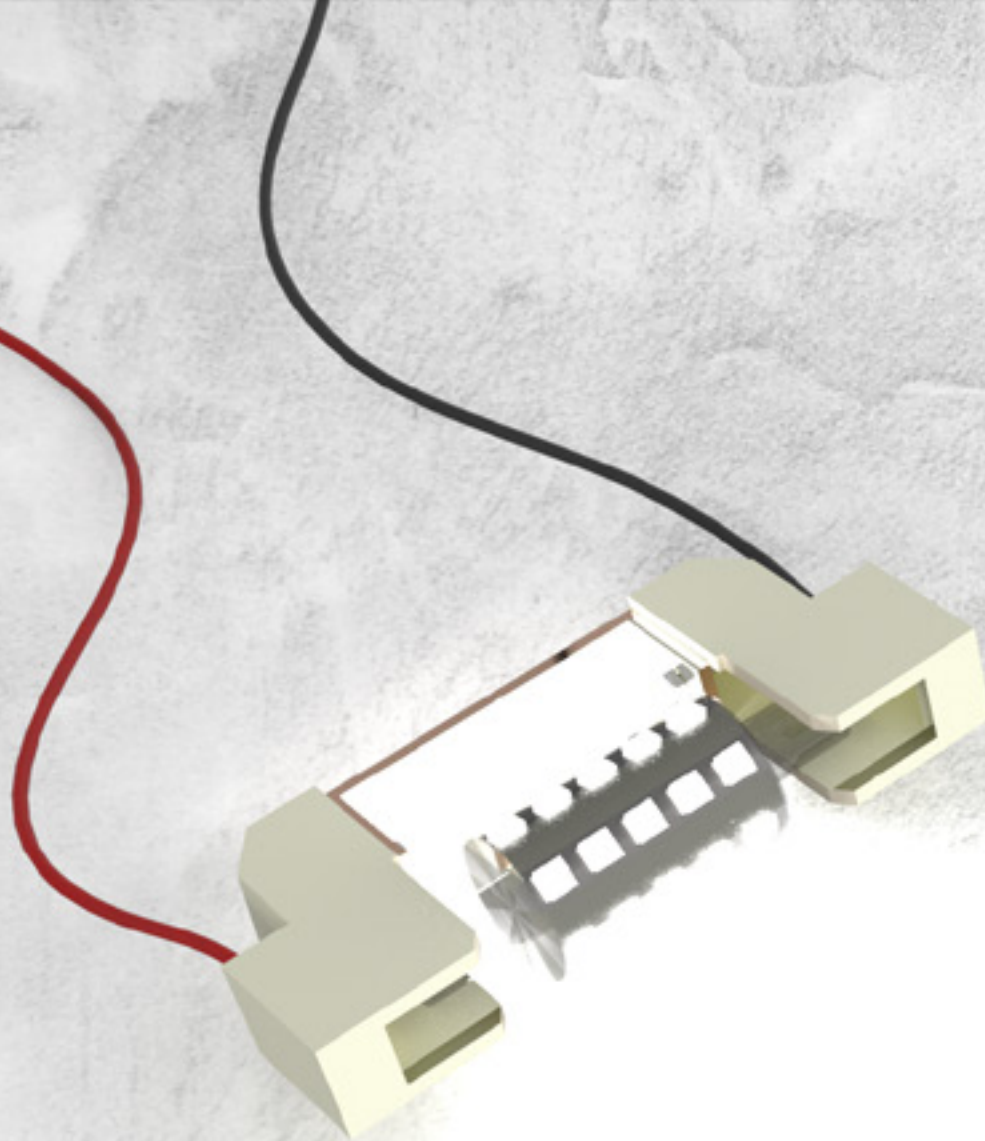
When turned off, their bodies alter every space, presenting sumptuous and refined reflections behind an elegant PVD coating that fully conceals the lighting mechanisms inside.

One formula unites the entire design which is: **lightreflects**light

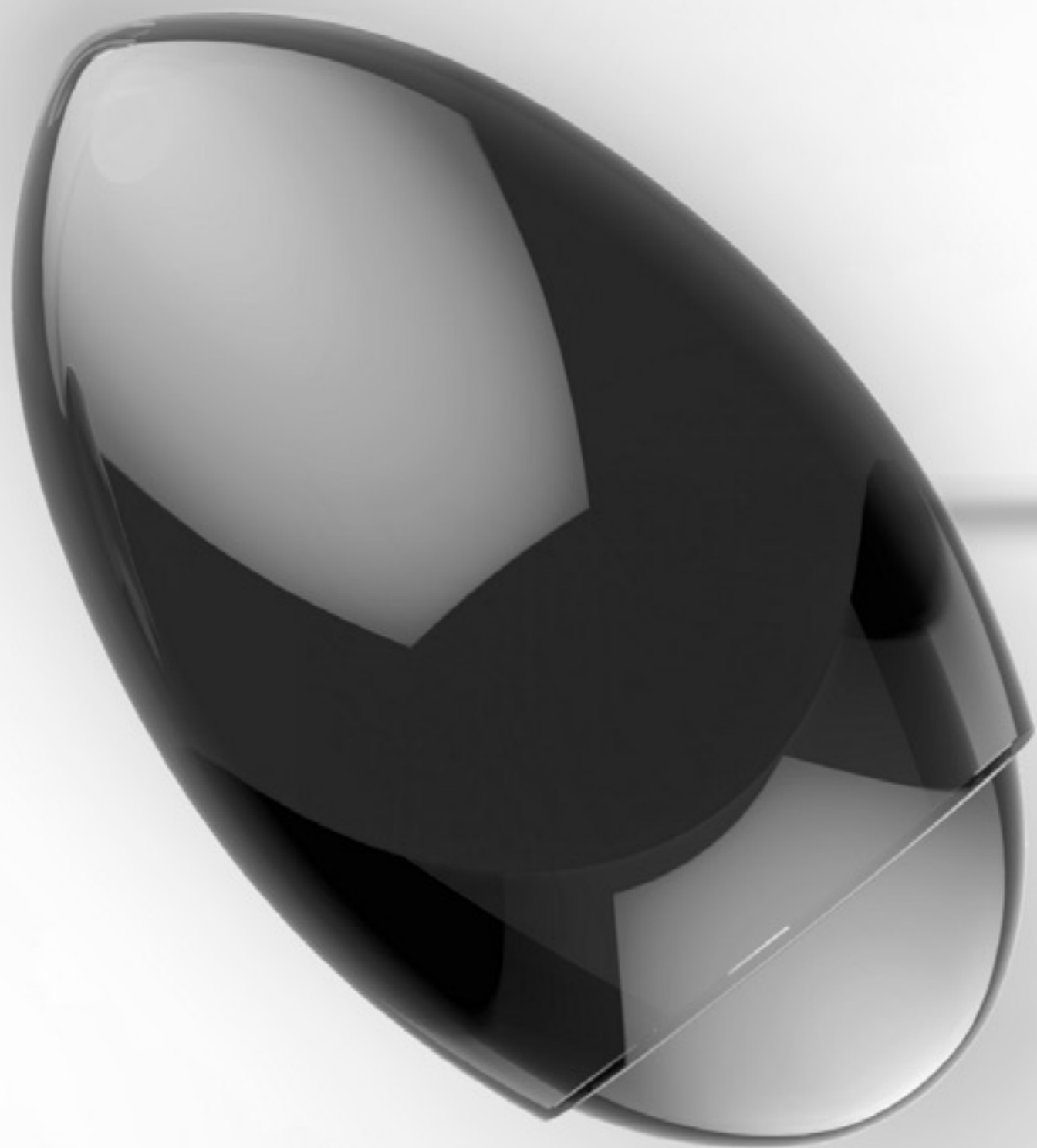


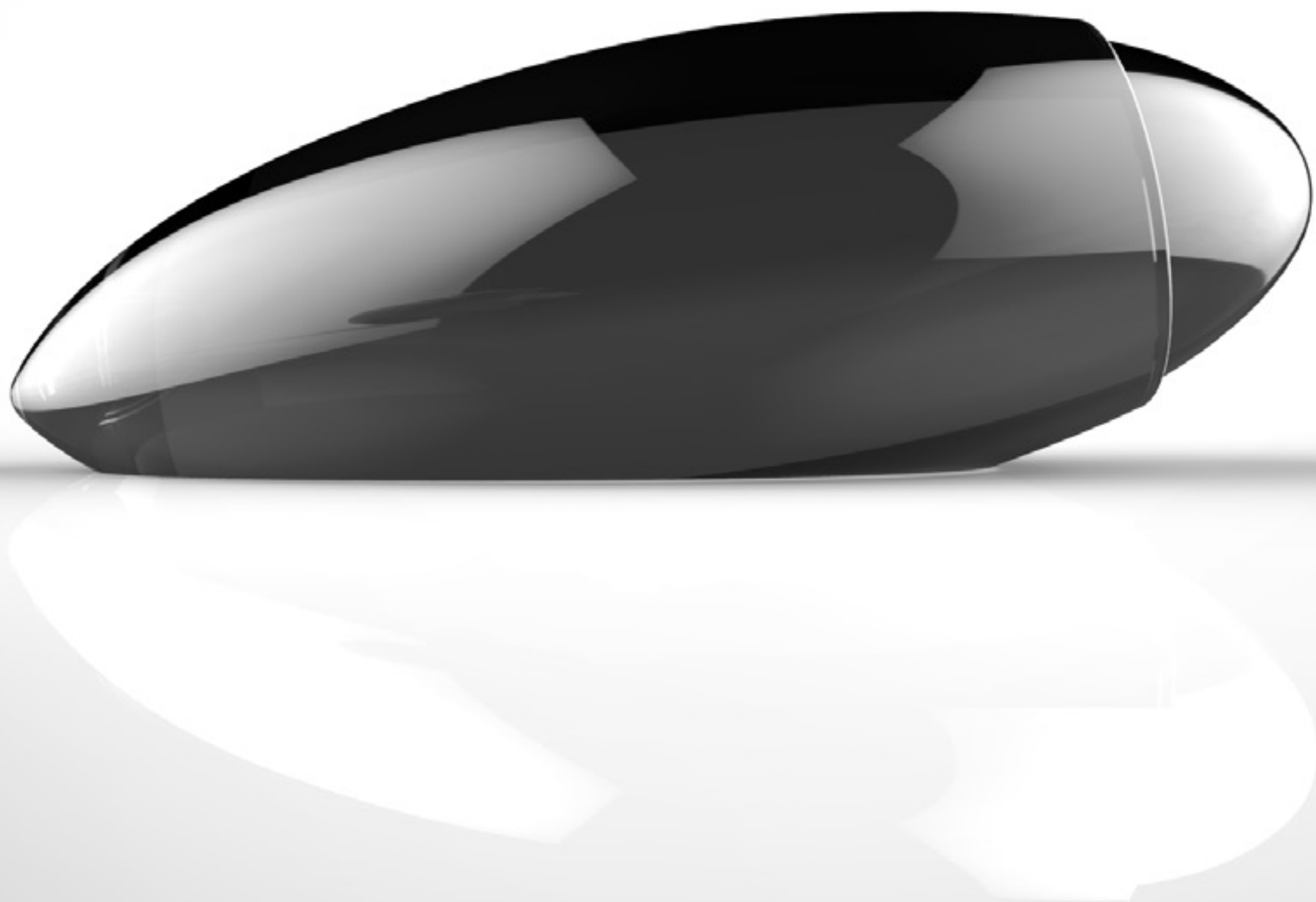
There are two ways of spreading light:
to be the candle or the mirror that reflects it.

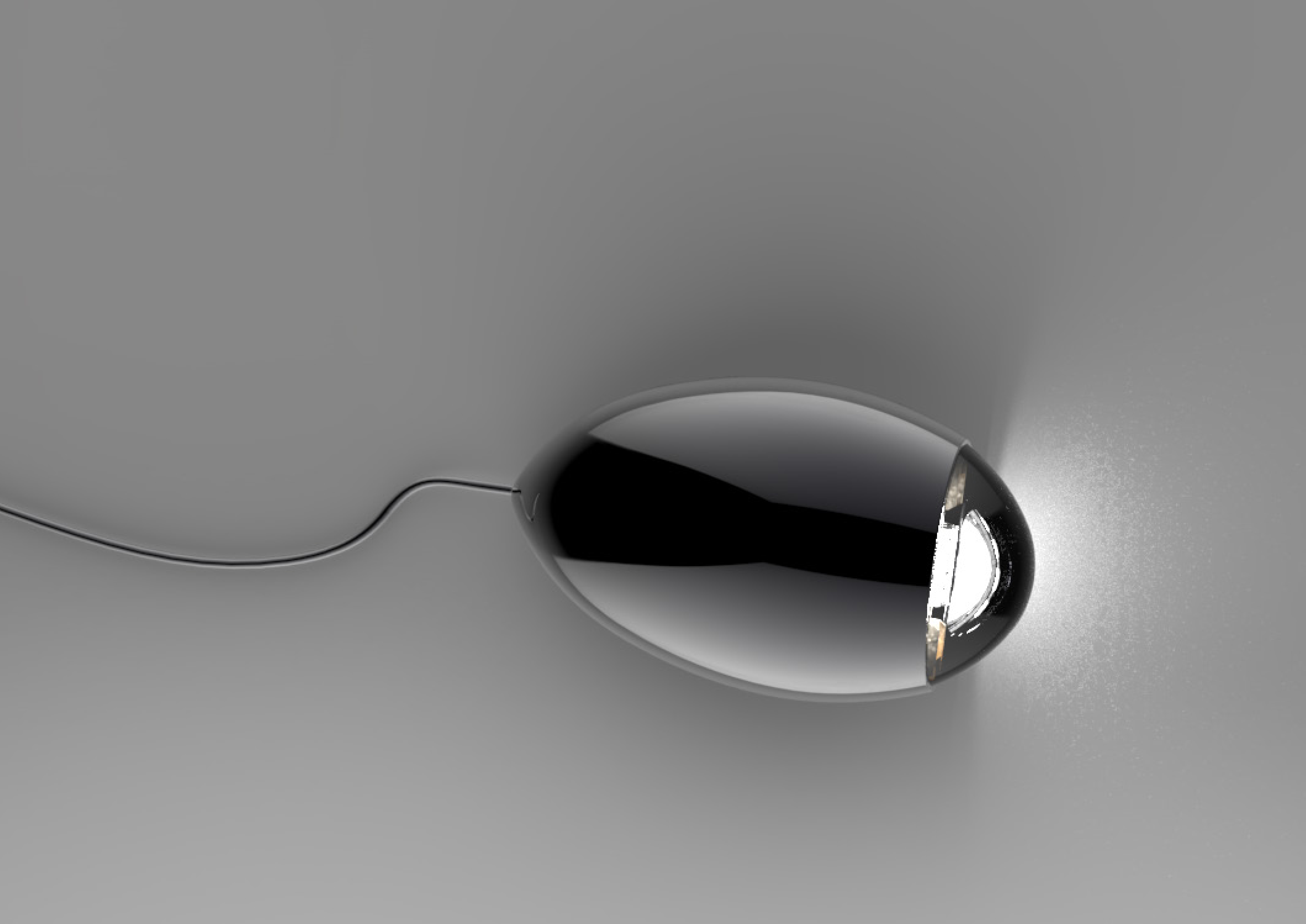
- EDITH WHARTON -

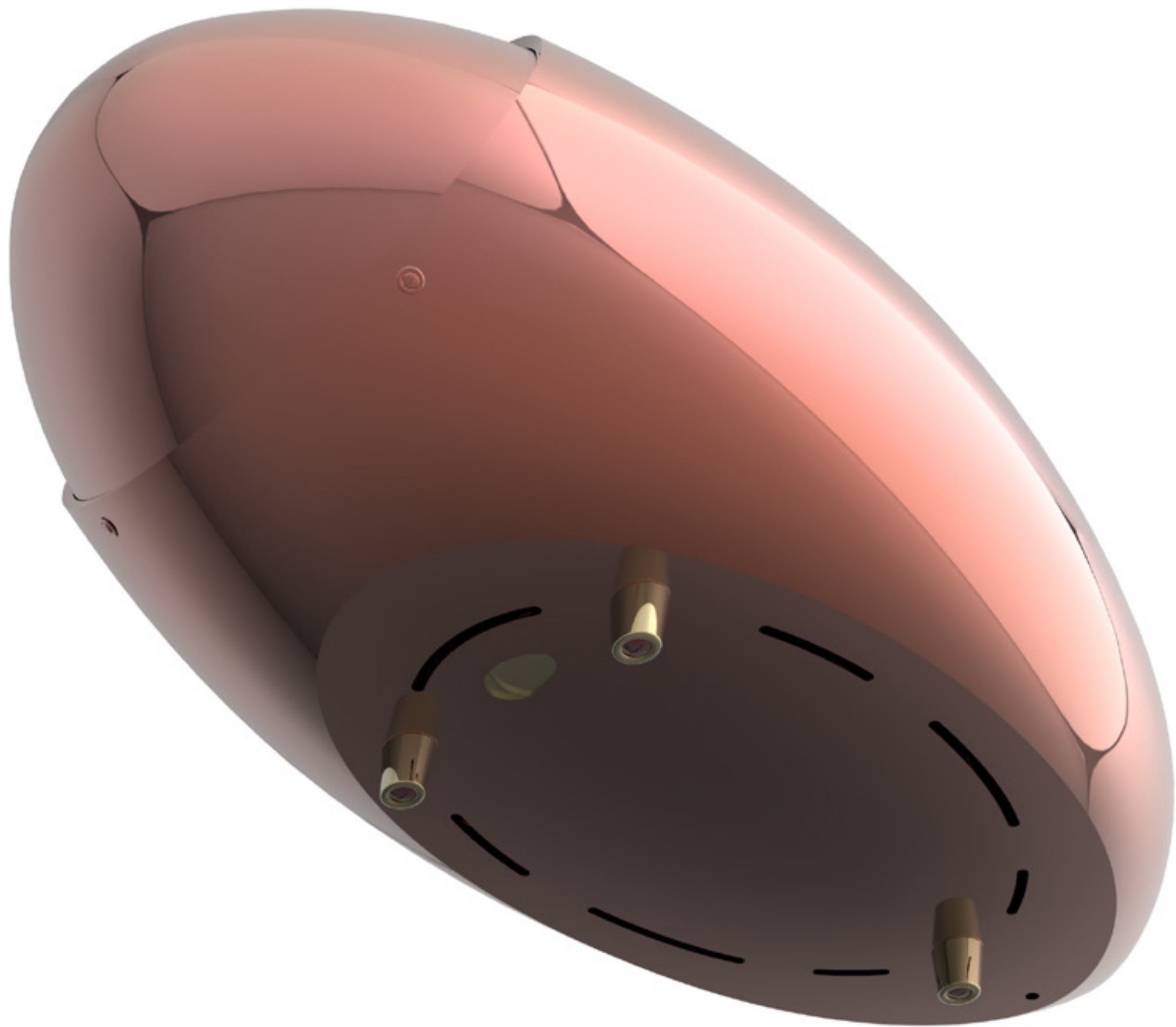


MOODBOARD



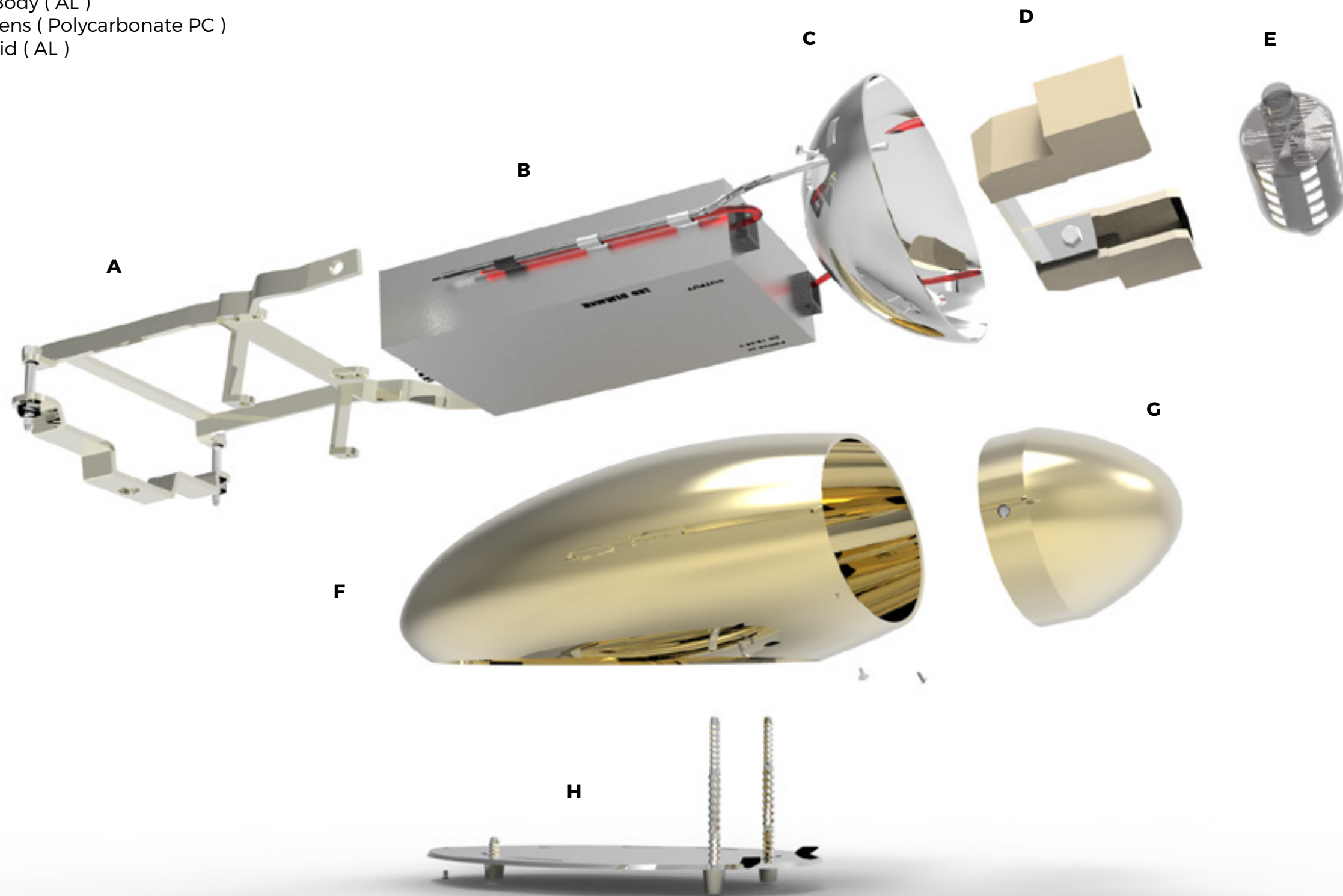


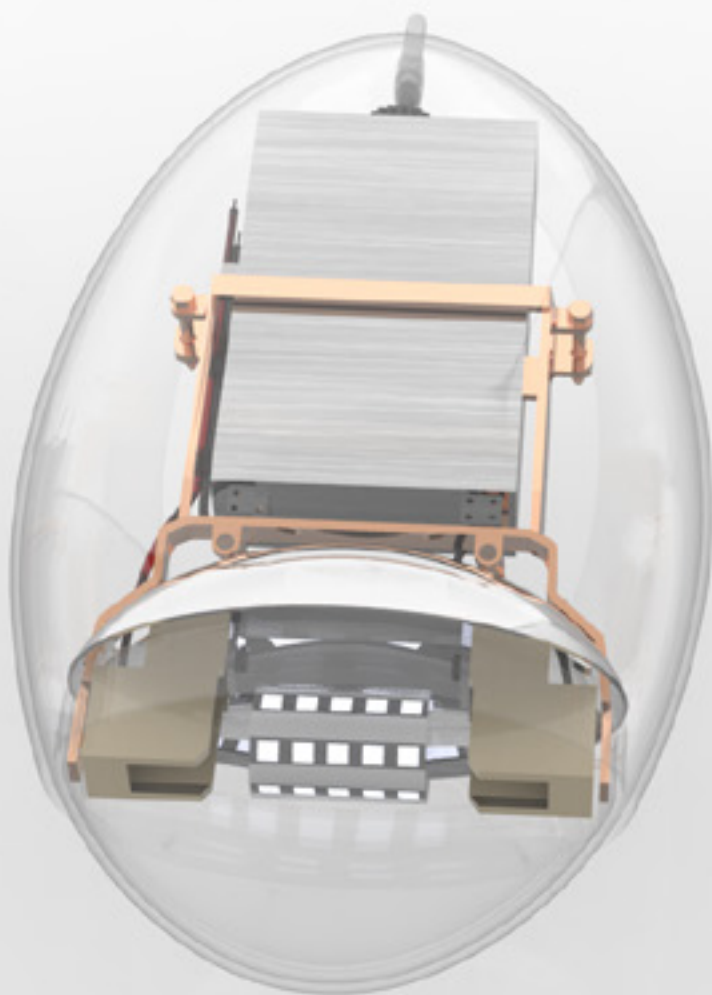
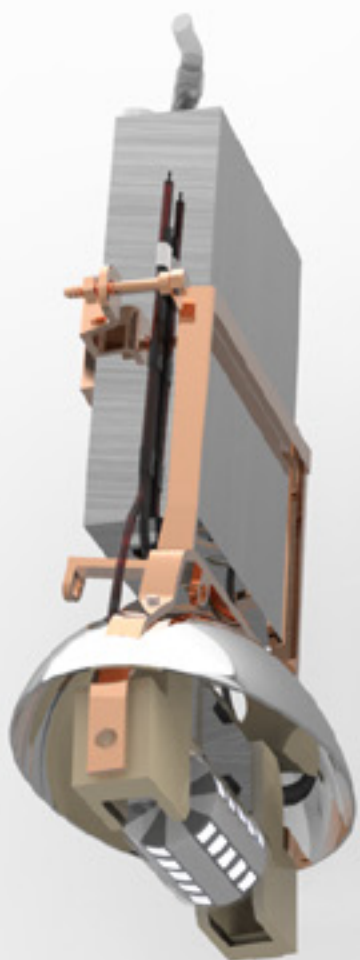




Main Components

- A** Metal Frame (Aluminum AL)
- B** Transformer / Dimmer (10W)
- C** Reflector (AL)
- D** Light Bulb Holder
- E** Light Bulb (LED - R7S - 5W)
- F** Body (AL)
- G** Lens (Polycarbonate PC)
- H** Lid (AL)







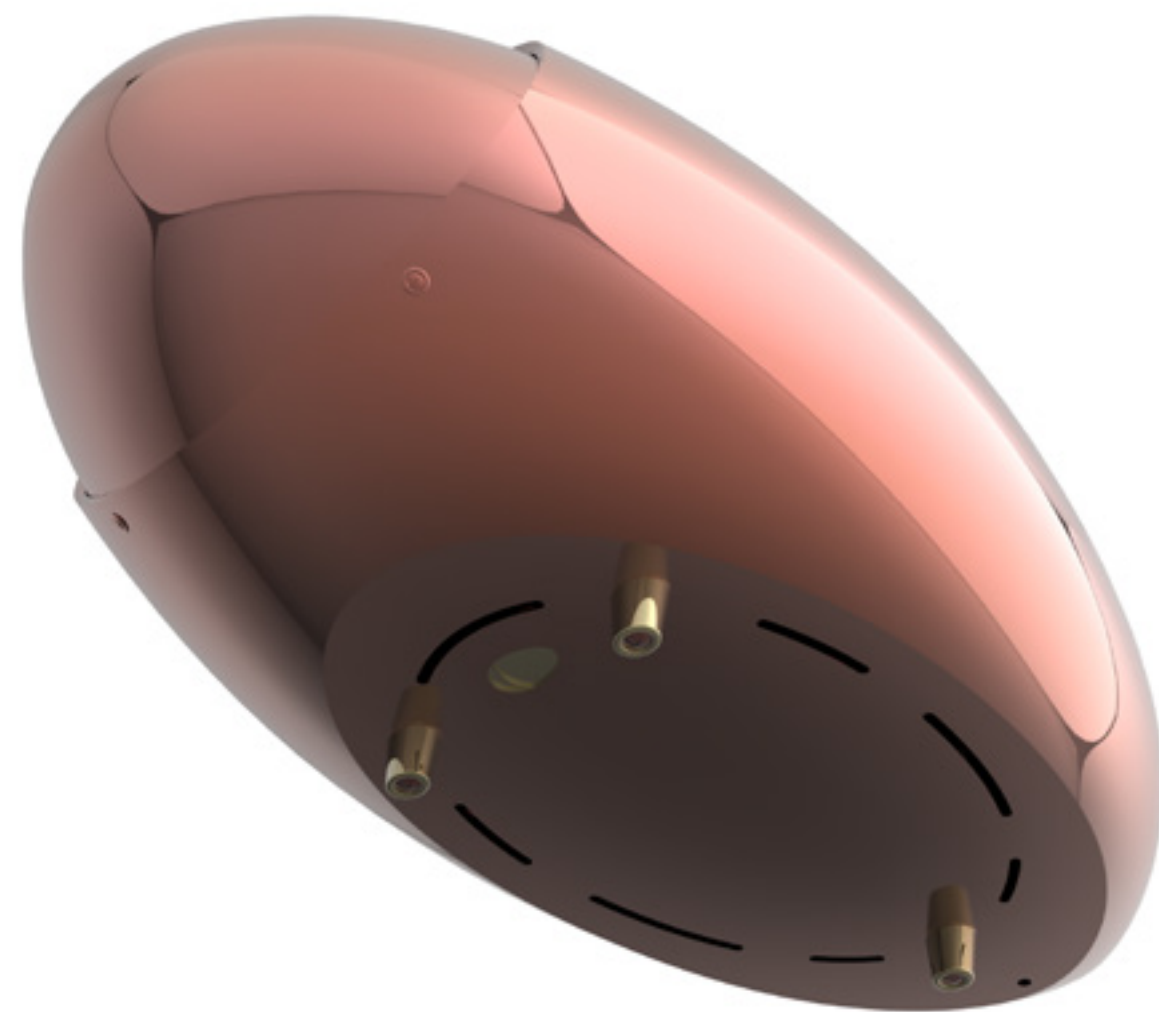
A ring rotator to swing
the lamp left and right



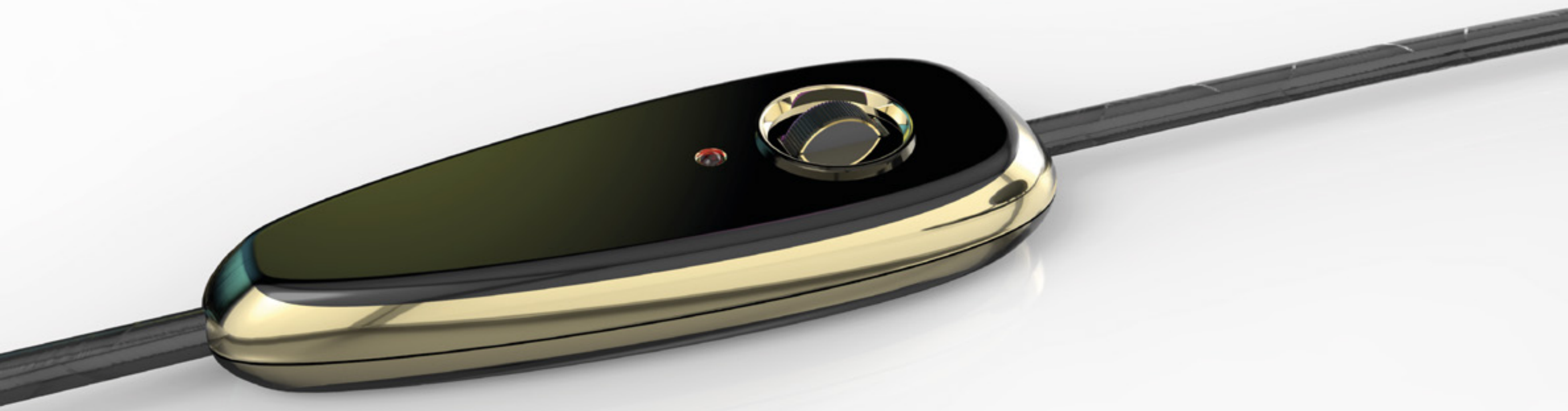
The joint allows the lamp to
flip up and down

Through a hole in the lid, the metal
frame is directly screwed to the
swing arm









fadinasr

Contact me - I'm only **one** click away



info@fadinasr.com



www.fadinasr.com



[iofadinasr](https://www.instagram.com/iofadinasr)



[fadinasr](https://www.fadinasr.com)